

Case Study: First Landings

Client: Sonica

Scope: Full Joinery & Upholstery

Project Duration: 8 weeks

Completion Date: Nov 2020

Award winning multi-national construction company, SONICA recently opened its ambitious "First Landings" and expand model for new Clients. The company is head-quartered in this new 30,000 sq ft modern complex. Designed by Kingston Lafferty Design (KLD), the space is a wholly bespoke incubator space for new Foreign Direct Investment Clients entering the Irish market. It is a location for these Clients to work, interview, hire and grow from.

Sonica awarded the prestigious joinery package to BCW Specialist Joinery LTD. The scope consisted of many bespoke design joinery elements with a focus on visual, touch and feel. BCW engaged with KLD and Sonica throughout the process to ensure the design intent was realised to a very accurate level. Material selection, sampling and mock-ups, construction methods and finishing standards were very much at the forefront of the process.



COMPUTER GENERATED 3D DESIGN RENDER

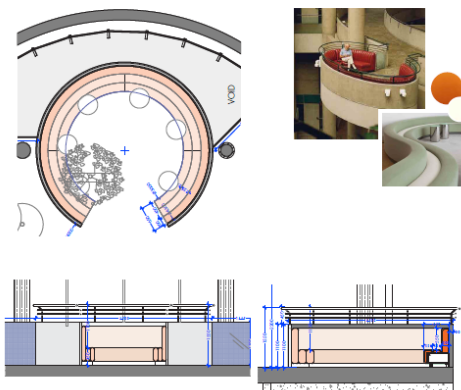


FINISHED INSTALLED JOINERY



Materials included CNC profiled plywood structure upholstered in various density FR foams and covered with commercial grade fabrics providing visually impressive, comfortable, hardwearing and easy cleaning finish.

J-16 FLOATING POD BANQUETTE



FLOATING POD BANQUET DESIGN



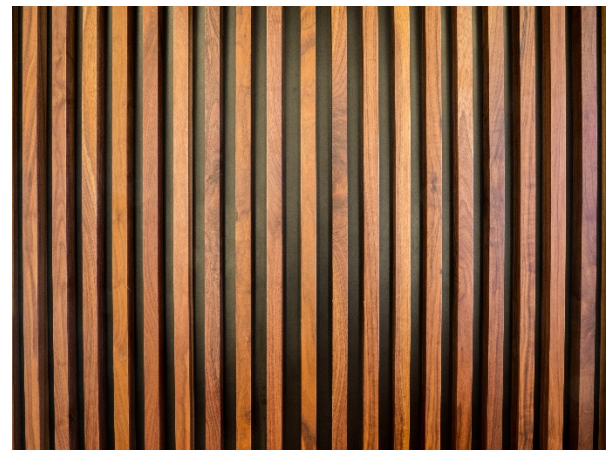
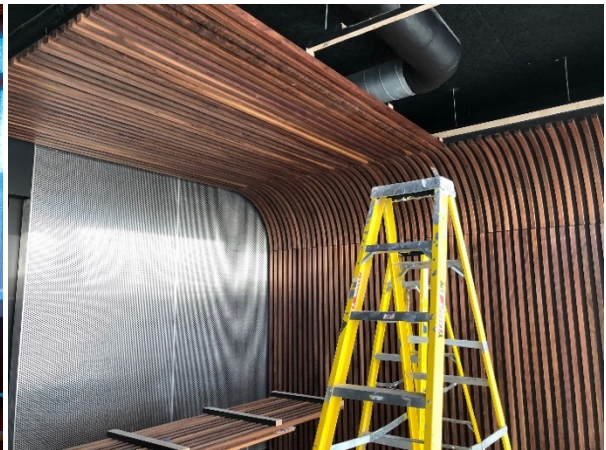
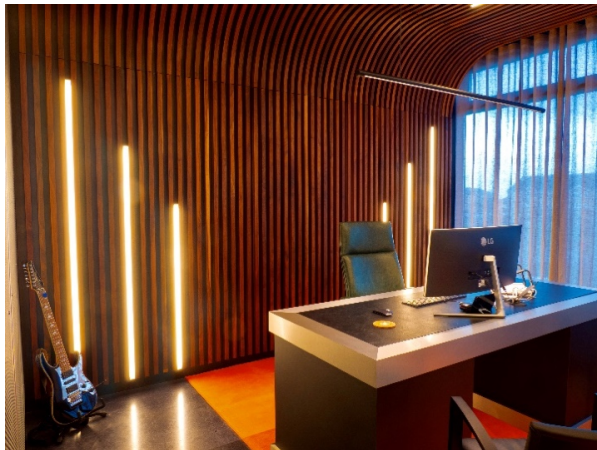
FINISHED INSTALLED JOINERY

Curved formed walls with rough render finish, bespoke fabricated balustrade rails powder coated in metallic grey and inset upholstered seating.

Directors Office



3D Concept



Wall and ceiling panelling fabricated off-site from handpicked solid walnut. Curved bulkheads were formed from thin strips of solid walnut laminated together in special jig to form curved shape. Directors desk finished in black infinity laminate with brushed pewter aluminium top with natural leather inset.



FORMING CURVED BULKHEAD WALNUT BATTENS

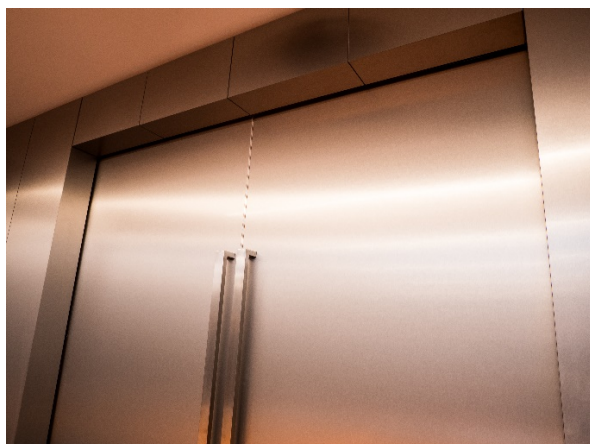
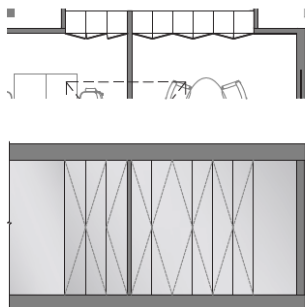


PREFABRICATING WALNUT PANELLING

Storage Walls

A total of 6 rooms were finished in brushed pewter aluminium panelling concealing large storage cabinet behind. The cabinet doors were fitted with touch opening mechanism to avoid the need for handles and to blend seamlessly with the wall panels.

J-43 STORAGE WALL

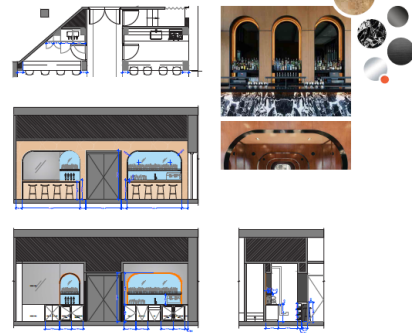


Bar



BAR 3D RENDER

J-08 BAR



BAR DRAWING ARCHITECT DESIGN

Bar Facade

Facade to be finished in Mappa Burl veneer and lacquered for protection. Black carbonne bosse aluminium laminate is be wrapped in alcove and returning to countertop top. Concealed orange LED strip light to underside of bar counter-top. - BACK BAR WALL Back wall of bar is surround shelving arch, packed out wall finished in grey smoked mirror. Back wall recessed within arch to be plain square edge mirror, Arch is wrapped in black carbon bosse aluminium as shown in reference image with concealing orange LED strip light to inside of arch . Shelving are black anodized aluminium. Countertops are polished black granite





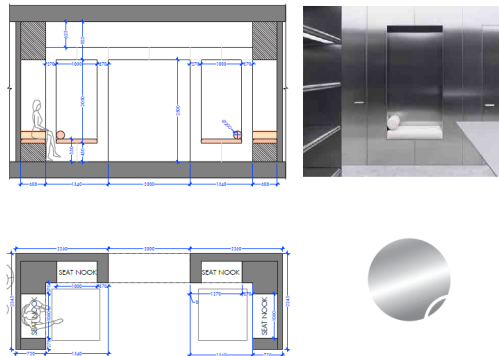
Library Nook

SPECIFICATION – WALLS - Walls ARE full height and clad to 2800mm with brushed pewter aluminium laminate.

SEAT PAD Seat pad is 100mm height achieving a seat height of 550mm. 25mm FR soft foam used on top with FR firm foam used beneath. Upholstered in soft black leather by Yarwood.

Each nook has one loose bolster cushion. FR Soft foam used and upholstered in soft black leather by Yarwood.

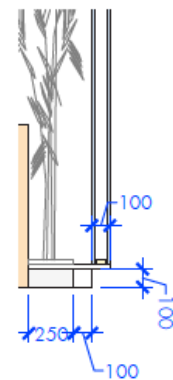
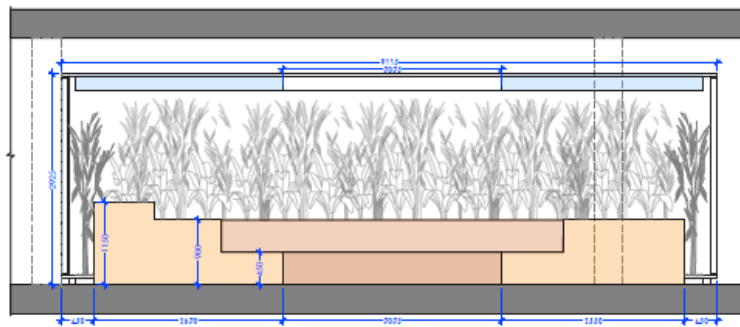
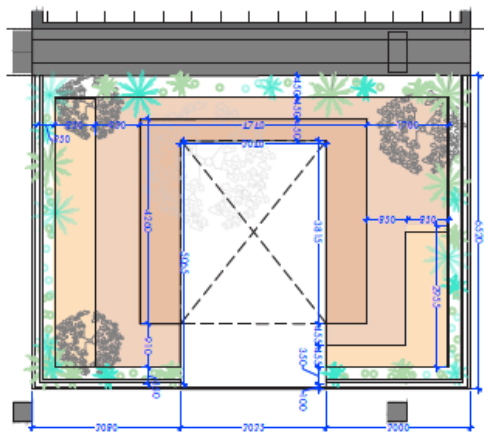
J-34 LIBRARY NOOK



Zen

SEATING Block steps constructed in plywood and fully upholstered to form seating beds/ seats of mixed dimensions. 200mm foam used on top for full comfort, upholstered in Gervasoni 3D fabric; E - 3D Grigio. 20mm foam is used on risers of blocks. Fabric appears seamless, as one piece with no joins visible on corners/ edges. Fabric is dressed down exterior of banquette to meet trough.

J-29 ZEN





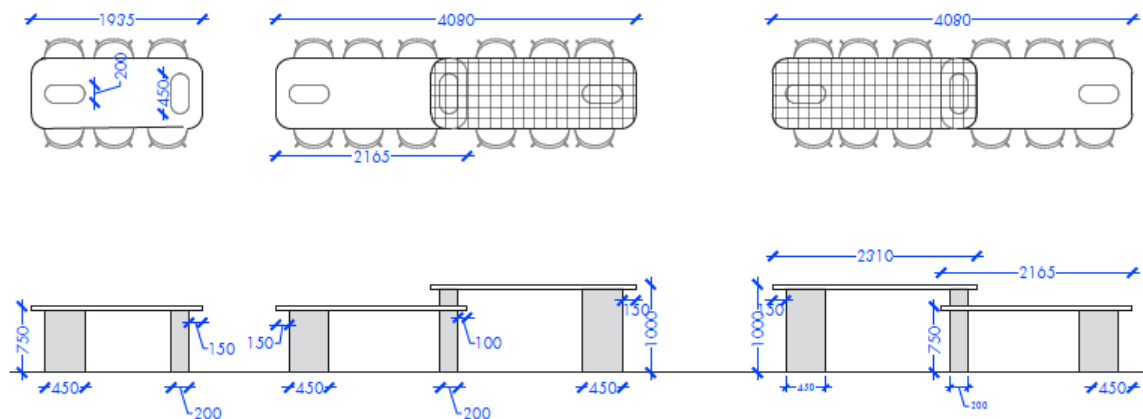
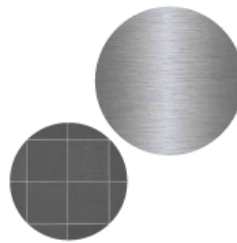


Central Tables

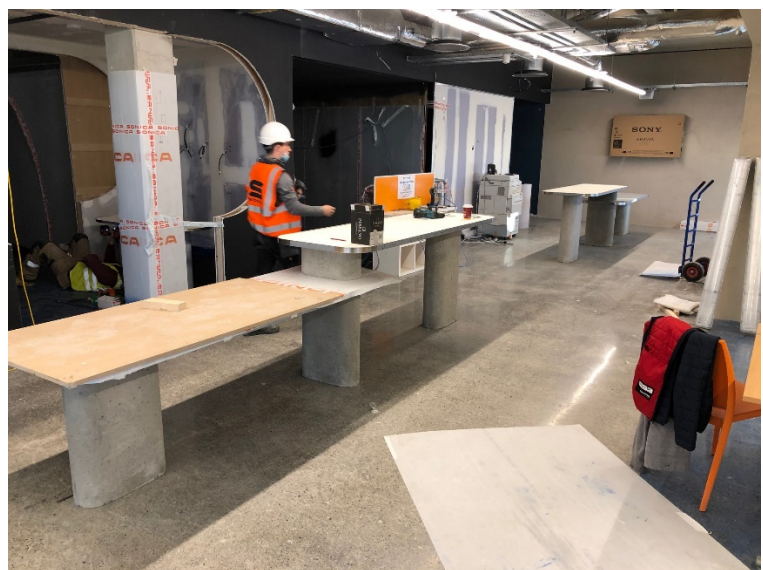
TABLETOPS - Tabletops are dining height and bar height. Dining height tabletop IS fully wrapped brushed stainless steel including edging. Bar height tabletop IS finished in 100mm x 100mm charcoal tile with grey grout to sit within brushed stainless-steel tray. –

BASE bespoke grey concrete table bases support the weight of tabletops. Central base of double height tables punctuates and supports both tabletops. Bases are chemically anchored to the floor.

J-22 CENTRAL TABLES





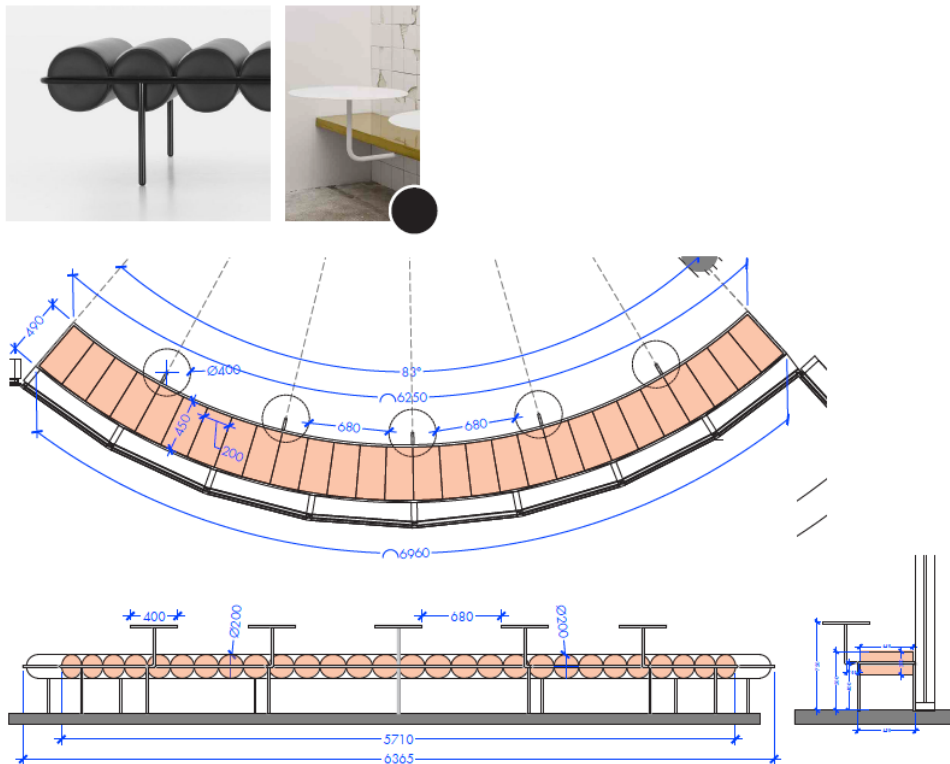


Curved Window Bench Seating

- BOLSTERS Bolsters are upholstered in soft black leather by Yarwood. FR foam lining is medium density. Bolsters are fixed directly to frame. All bolsters are the same size, shape and thickness of foam. Cylindrical shape of each bolster is determined by the curved angle of the frame. –

BENCH Length of bench fits start to finish between window mullions as shown. dimensions and angle are based on the existing window radius. Seat frame, legs and tables support are black powder coated steel. -TABLES Custom tables are fixed to seating base with black powder coated 20mm steel arm. Tables are black powder coated steel 'disk', Tabletop 400mm diameter

J-02 CURVED WINDOW BENCH

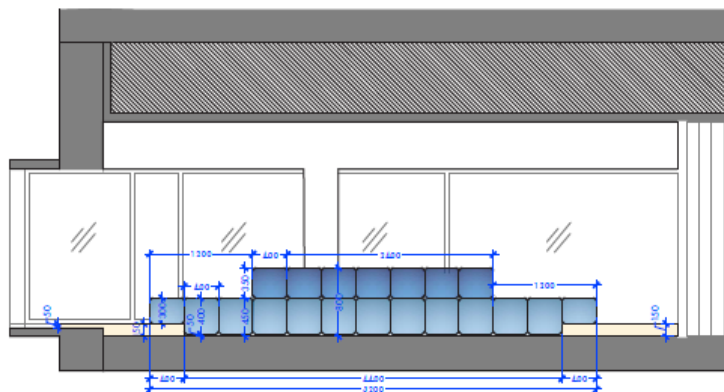
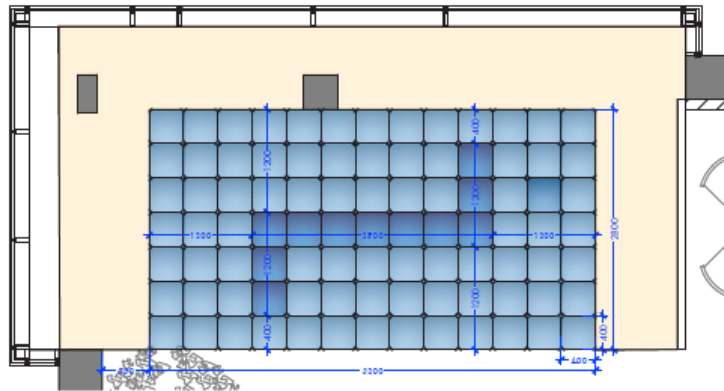






Window Seating

J-23 WINDOW SOFT SEATING

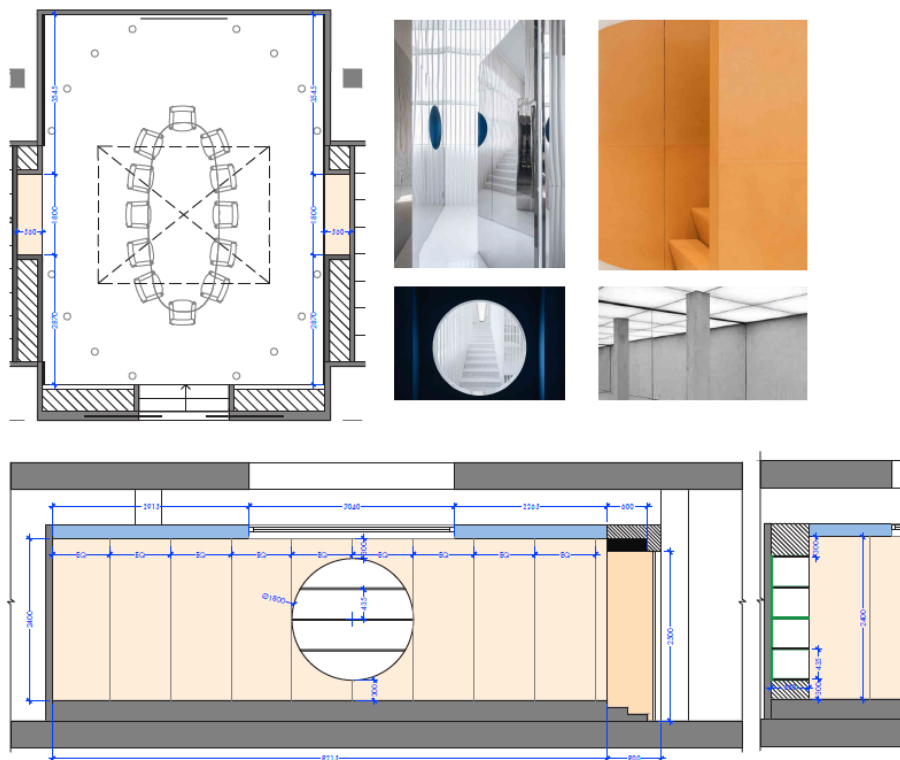


SPECIFICATION -- SEAT BASE Seat height 450mm form FFL. Upholstered 'tufts' are to be 400x400 mm squares and fixed directly to each other as shown in reference image, no fixings are visible. Tufts to be 25mm FR soft foam are used on top, with FR medium density foam beneath. Seating is upholstered in blue velvet. 50mm shadow gap beneath tufts. **SEAT BACK** - Central high back seating is built in fixed location as shown. Seat back is one continuous block giving height of 350mm for backrest with overall height of 800mm. Seat back is upholstered in blue velvet.

Boardroom

SPECIFICATION - JOINERY WALL No. 2 side walls have open shelving unit fitted centrally, either side of board room. Walls are fully clad in light brown perforated leather on 12mm foam on 25mm rockwool for acoustic absorption with circular cut out for open shelving; 25mm MDF sandwich shelves fully brushed pewter aluminium HPL. Folded steel ring fitted to perimeter of circle to conceal where leather meets laminate. All fixings / supports to be concealed within shelves. All internals are 22mm MDF & clad in the same leather; back board/ inner circumference panel of cut out ope. Leather is directly applied to factory fabricated panels and fixed with split battens wall as per manufactures recommendations. Concealed LED strip light are fitted to the underside of back of shelves, LED warm white.

J-44 BOARD ROOM





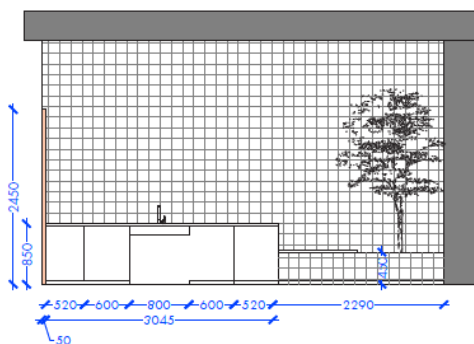
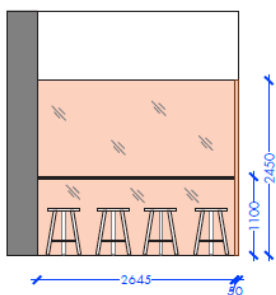
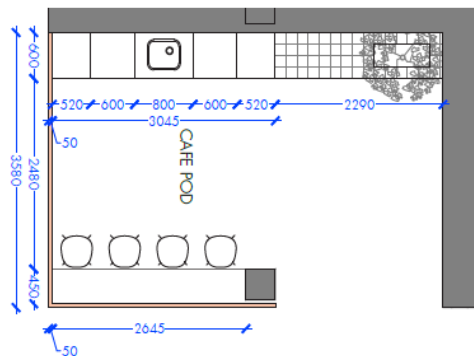


Café Kitchen

SPECIFICATION - AMBER GLASS POD Translucent amber cross reeded glass. Pod height is 2500mm with open top. COUNTERTOP 30mm counter-top finished Orange Hi-Macs solid surface. All edges are square. Worktop height is 850mm with a recess of 800mm wide below to comply with wheelchair access. Integrated 150mm deep stainless-steel sink is under mounted. Wall beneath sink is packed out by 100mm to conceal sink plumbing. Black mixer tap are used. - Back wall to be fully tiled in 150x150mm tiles, colour is matte white with black grout. KITCHEN UNITS 22mm doors with 18mm interior shelving to be spray finished white. Door fronts are finished Formica orange HPL with matching pvc edging. Doors have matching powder coated handles and all door hinges are soft closing and concealed.

BAR TABLE Floating counter to be finished in orange Hi-Macs solid surface returned down to the floor.

J-38 CAFE POD





Tunnel Seating

SPECIFICATION - BOLSTERS Bolsters ARE upholstered in orange neoprene fabric, AND FR treated. FR foam lining is be medium density. Bolsters fixed directly cylinder wall with no fixing to be visible. All upholstered bolsters to be the same size and thickness. – **CYLINDER** - Cylinder was prefabricated off-site in 4 segments. The interior to be light grey rough render to achieve similar look to reference image.

J-35 TUNEL SEATING LONG

